



**OMTIS SE**

A photograph of a large solar farm with rows of solar panels stretching across a valley. The sun is setting in the background, casting a warm glow over the scene. The image is partially overlaid by a large red circular graphic on the left side.

**A WORLD-CLASS  
SOLAR PRODUCT  
SUPPLIER**

**SHIFTING** • THE FUTURE

2022V1.1



# DIVERSIFIED SOLAR MODULES MEET DIFFERENT NEEDS

OMTIS SE Company redefines a variety of products by integrating large silicon wafers with bifacial-cell, multi-bus-bar, high-density encapsulation and other related technologies. With years of R&D investment, OMTIS SE Company innovates and continues to deliver highly competitive products and value to the customers.

## SV SERIES



Wafer Size: 210mm  
Power Range:  
595-610W/655-670W

## SIV SERIES



Wafer Size 182 mm  
Power Range:  
390-405W/525-540W

## SIII SERIES



Wafer Size 166 mm  
Power Range:  
360-375W/435-450W

## MX



Maximize power generation  
Flexible system design

## SV BIFACIAL SERIES



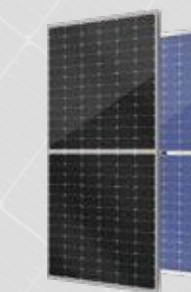
Using reflected light,  
10-30% more energy  
generation

## SIV BIFACIAL SERIES



Using reflected light,  
10-30% more energy  
generation

## SIII BIFACIAL SERIES



Using reflected light,  
10-30% more energy  
generation

## SMART



Fully compatible and multifunctional  
Intelligent monitoring  
to optimize power output



**OMTIS SE**

# **GLOBAL PROJECT REFERENCE**

2022V1.0

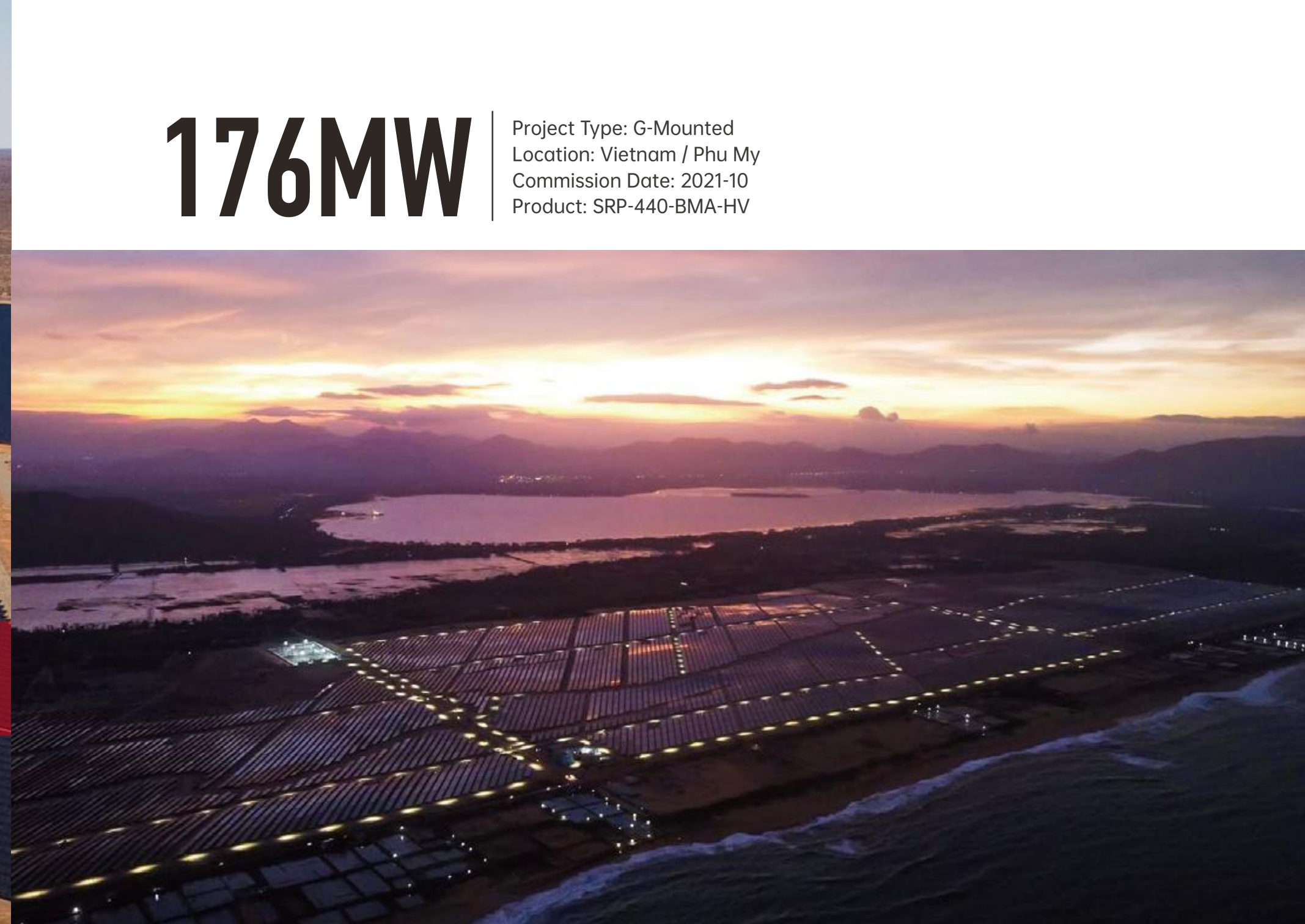


# Utility

We understand the vastness and depth of the earth. By providing sufficient energy to large-scale stations, we dedicate our enthusiasm to every place that needs light. With years of professional experience, Partner Company can provide you the perfect PV products for your project so as to maximize your benefits of investment.

# 176MW

Project Type: G-Mounted  
Location: Vietnam / Phu My  
Commission Date: 2021-10  
Product: SRP-440-BMA-HV





# 123MW

Project Type: G-Mounted  
Location: Ukraine / Nikopol  
Commission Date: 2019-3  
Product: SRP-330-6PA



# 120MW

Project Type: G-Mounted  
Location: Philippines / Laguna  
Commission Date: 2021-6  
Product: SRP-405-BMA-HV





# 63MW

Project Type: G-Mounted  
Location: Philippines / Zambales  
Commission Date: 2021-3  
Product: SRP-400 / 405-BMA-HV



# 60MW

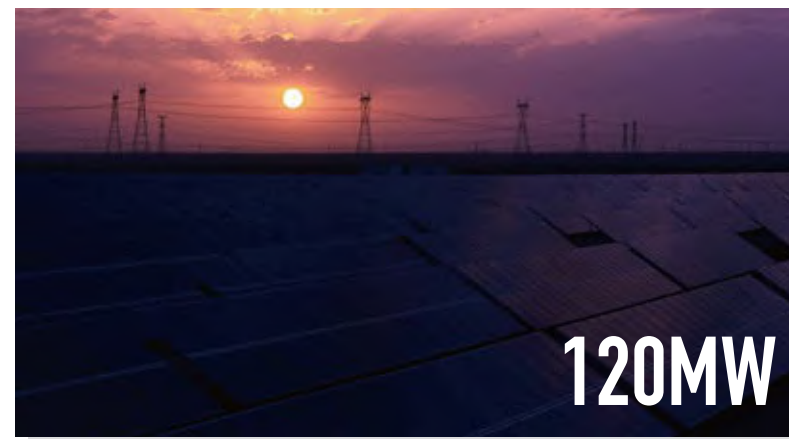
Project Type: G-Mounted Location:  
Philippines / Zamboanga  
Commission Date: 2020-1  
Product: SRP-345-6MA,SRP-365-6MA





# 50MW

Project Type: G-Mounted  
Location: Vietnam / Khanh  
Hoa  
Commission Date: 2019-5  
Product: SRP-340-6MA



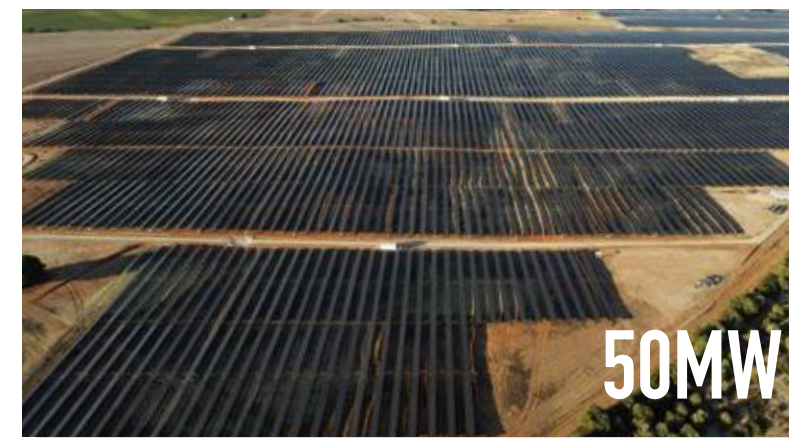
Project Type: G-Mounted  
Location: China / Qinghai  
Commission Date: 2016-12  
Product: SRP-250-6PB



Project Type: G-Mounted  
Location: China / Hunan  
Commission Date: 2018-6  
Product: SRP-320-6PA



Project Type: G-Mounted  
Location: India / Karnataka  
Commission Date: 2017-6  
Product: SRP-6PA-Series



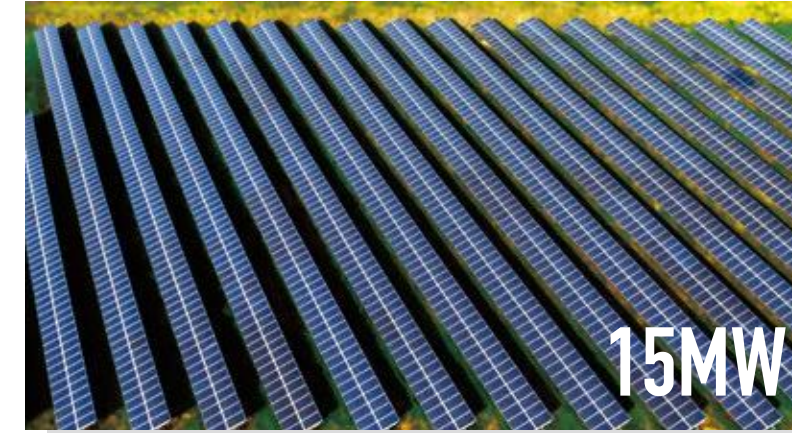
Project Type: G-Mounted  
Location: Spain / Jerez  
Commission Date: 2020-11  
Product: SRP-530-BMA-BG



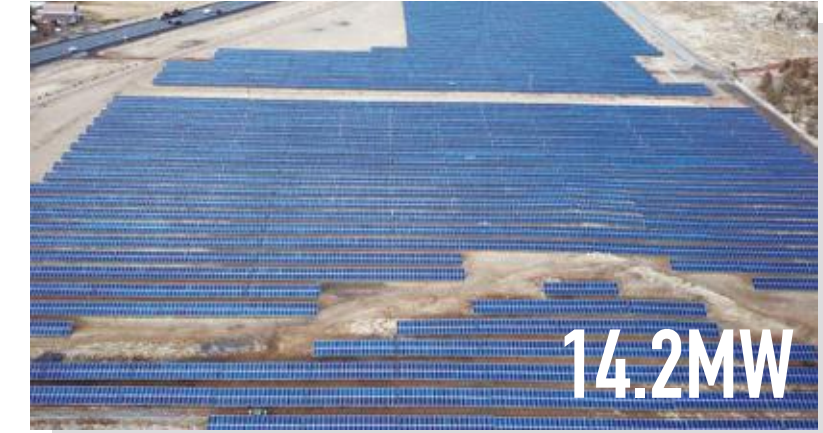
Project Type: G-Mounted  
Location: China / Shanxi  
Commission Date: 2017-6  
Product: SRP-265-6PB



Project Type: G-Mounted  
Location: Cambodia / Kampong Speu  
Commission Date: 2020-1  
Product: SRP-335-BPA



Project Type: G-Mounted  
Location: India / Tamil Nadu  
Commission Date: 2014-9  
Product: EzBox™ 6PB series



Project Type: G-Mounted  
Location: Philippines / Davao  
Commission Date: 2017-11  
Product: SRP-325-6PA



Project Type: G-Mounted  
Location: Philippines / Bulacan  
Commission Date: 2020-1  
Product: SRP-6MA-HV



Project Type: G-Mounted  
Location: Ukraine / Chernovsk  
Commission Date: 2020-7  
Product: SRP-400-BMA-HV



Project Type: G-Mounted  
Location: Ukraine / Nicopol  
Commission Date: 2019-11  
Product: SRP-330-6PA



Project Type: G-Mounted  
Location: Australia / New South Wales  
Commission Date: 2019-5  
Product: SRP-325-6PA MX



# 2MW

Project Type: Commercial Rooftop  
Location: Vietnam / Vung Tau  
Commission Date: 2020-10 Product:  
SRP-440-BMZ-HV



Project Type: Commercial Rooftop  
Location: China / Zhejiang  
Commission Date: 2017-12  
Product: SRP-270-6PB



Project Type: Commercial Rooftop  
Location: Italy / Bologna  
Commission Date: 2012-3  
Product: SRP-240-6PB



Project Type: Commercial Rooftop  
Location: China / Changzhou  
Commission Date: 2018-1  
Product: SRP-325-E01B



Project Type: Commercial Rooftop  
Location: Austria / Salzburg  
Commission Date: 2017-7  
Product: SRP-320-6PA



Project Type: Commercial Rooftop  
Location: Thailand / Chachoengsao  
Commission Date: 2018-1  
Product: SRP-340-6MA



Project Type: Commercial Rooftop  
Location: Singapore  
Commission Date: 2017-10  
Product: SRP-325-6PA



Project Type: Commercial Rooftop  
Location: South Africa / Cape Town  
Commission Date: 2018-3  
Product: SRP-320-6PA



Project Type: Commercial Rooftop  
Location: Guatemala / Ciudad de Guatemala  
Commission Date: 2020-7  
Product: SRP-395-BMA-HV



Project Type: Commercial Rooftop  
Location: China / Macao  
Commission Date: 2018-4  
Product: SRP-300-6MB



Project Type: Commercial Rooftop  
Location: China / Changzhou  
Commission Date: 2017-5  
Product: SRP-265-6PB



Project Type: Commercial Rooftop  
Location: Turkey / Ankara  
Commission Date: 2021-11  
Product: SRP-450-BMA-HV



Project Type: Commercial Rooftop  
Location: Italy / Dalmine (BG)  
Commission Date: 2020-5  
Product: SRP-315-6MB



# Residential

We know more about the comfort and warmth of the family and commit to bringing people an economical and convenient life experience. Thousands of houses around the globe are installed with OMTIS SE Company solar systems, so they can now enjoy clean power with a lower electricity bill and, moreover, make profits from them.



# 58.4kW

Project Type: Residential Rooftop  
Location: China / Hubei  
Commission Date: 2018-7  
Product: SRP-315-E01B





# 35kW

Project Type: Residential Rooftop  
Location: USA / Kansas  
Commission Date: 2021-10  
Product: SRP-370-BMB-black-HV



Project Type: Residential Rooftop  
Location: Philippines / Manila  
Commission Date: 2017-1  
Product: SRP-320-E01B



Project Type: Residential Rooftop  
Location: China / Zhejiang  
Commission Date: 2017-8  
Product: SRP-295-E11B



Project Type: Residential Rooftop  
Location: Australia / Queensland  
Commission Date: 2013-5  
Product: SRP-260-6PB



Project Type: Residential Rooftop  
Location: Denmark  
Commission Date: 2014-2  
Product: SRP-250-6MB



# Other Applications

We have the better understanding of the harmony of man and nature. Through continuous innovation of methods for green power generation, we have interpreted the vivid definition of sustainable development. We consistently improves our products to develop more applications for solar energy and are willing to contribute to the green earth and harmonious coexistence of all.

# 55MW

Project Type: Fishery Hybrid PV Plant  
Location: China / Yueyang  
Commission Date: 2018-6  
Product: SRP-320-6PA





# 1.5MW

Project Type: Flexible Mounting System  
Location: China / Henan  
Commission Date: 2018-4  
Product: SRP-300-6MB-DG SRP-330-BMB-DG



Project Type: Fishery Hybrid PV Plant  
Location: China / Changzhou  
Commission Date: 2018-4  
Product: SRP-270-6PB-DG



Project Type: Expressway Solar Application  
Location: China / Hubei  
Commission Date: 2018-1  
Product: SRP-280-6MB



Project Type: Parking Lot  
Location: India  
Commission Date: 2017-5  
Product: SRP-320-6PA



Project Type: Floating Project  
Location: Singapore  
Commission Date: 2016-10  
Product: SRP-315-6PA



# SIV SERIES

Small Changes, Big Accomplishments

## 540-555W



### ● SIV SERIES

Partner Company redefined the high-efficiency module series by integrating 182mm silicon wafers with multi-busbar and half-cut cell technologies. Partner Company panel combined creative technology effectively and extremely improved the module efficiency and power output.

### ● KEY FEATURES

- Less mismatch to get more power
- Less power loss by minimizing the shading impact
- Competitive low light performance
- 3 times EL test to ensure best quality
- Ideal choice for utility and commercial scale projects by reduced BoS and improved ROI
- Outstanding reliability proven by PVEL for stringent environment condition:
  - Sand, acid, salt and hail stones
  - 2400 Pa wind load and 5400 Pa snow load
  - Anti-PID

### ● QUALITY SYSTEM

ISO9001 / ISO14001 / ISO45001

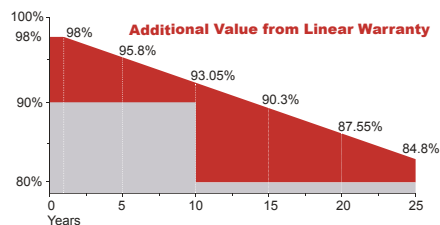
### ● PRODUCT CERTIFICATION



### ● INSURANCE

## PICC

### ● WARRANTY



Guarantee on product material and workmanship

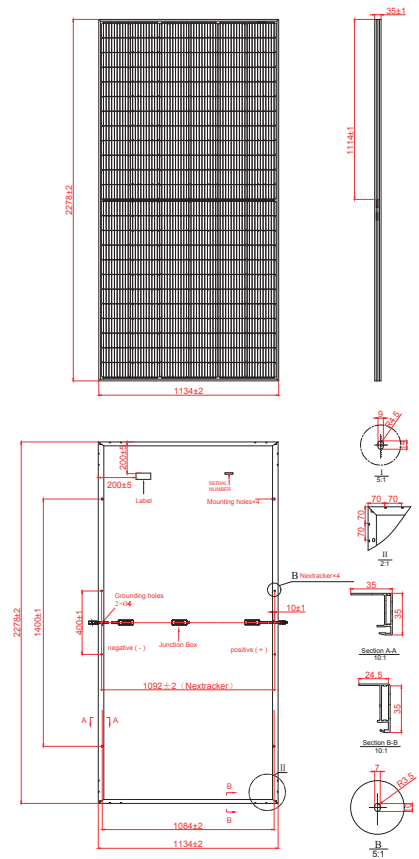


Linear power output warranty

## Electrical Characteristics

Module Type	SRP-540-BMA-HV		SRP-545-BMA-HV		SRP-550-BMA-HV		SRP-555-BMA-HV	
	STC	NOCT	STC	NOCT	STC	NOCT	STC	NOCT
Maximum Power at STC (Pmp)	540	406	545	409	550	414	555	418
Open Circuit Voltage (Voc)	49.50	46.18	49.60	46.32	49.70	46.40	49.80	46.50
Short Circuit Current (Isc)	13.81	11.16	13.90	11.23	14.00	11.32	14.10	11.41
Maximum Power Voltage (Vmp)	41.55	38.39	41.80	38.41	42.05	38.58	42.31	38.68
Maximum Power Current (Imp)	13.00	10.59	13.04	10.65	13.08	10.73	13.12	10.81
Module Efficiency at STC(%)	20.90		21.10		21.29		21.48	
Power Tolerance	(0, +4.99W)							
Maximum System Voltage	1500V DC							
Maximum Series Fuse Rating	25 A							

STC: Irradiance 1000 W/m<sup>2</sup> module temperature 25°C AM=1.5  
Power measurement tolerance: +/-3%



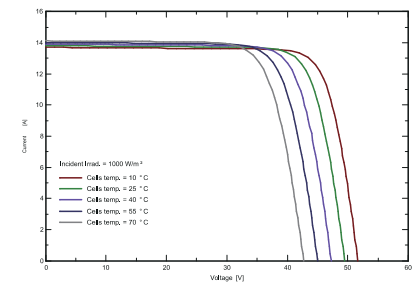
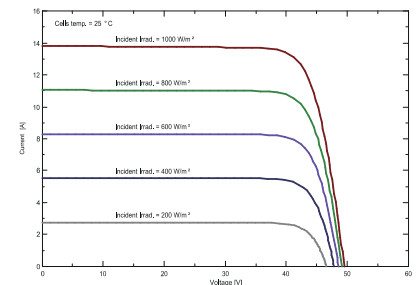
## Temperature Characteristics

Pmax Temperature Coefficient	-0.34 %/°C
Voc Temperature Coefficient	-0.26 %/°C
Isc Temperature Coefficient	+0.05 %/°C
Operating Temperature	-40 ~ +85 °C
Nominal Operating Cell Temperature(NOCT)	45±2 °C

## Mechanical Specifications

External Dimensions	2278x1134x35 mm
Weight	27.0 kg
Solar Cells	PERC Mono (144pcs)
Front Glass	3.2mm AR coating tempered glass, low iron
Frame	Anodized aluminium alloy
Junction Box	IP68, 3 diodes
Output Cables	4.0mm <sup>2</sup> , 250mm(+)/350mm(-) or Customized Length
Mechanical Load	Front side 5400Pa/ Rear side 2400Pa

## I-V Curve



## Packing Configuration

	2278x1134x35 mm	
Container	20'GP	40'HQ
Pieces per Pallet	31+4*	31
Pallets per Container	4	20
Pieces per Container	140	620

\* 31+4 pieces per pallet is the special package which only suits for container transport.  
For details, please consult Partner Company.